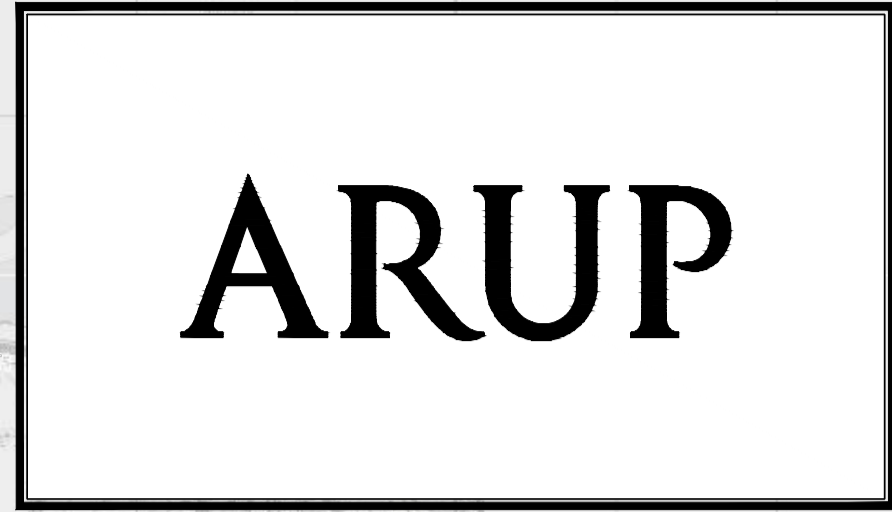


Site Location Plan





BUSCONNECTS DUBLIN CORE BUS CORRIDORS INFRASTRUCTURE WORKS

BELFIELD / BLACKROCK TO CITY CENTRE CORE BUS CORRIDOR SCHEME

SITE LOCATION MAP AND SITE LOCATION PLAN	
DRAWING SERIES NUMBER(S)	DRAWING SERIES DESCRIPTION
BCIDC-ARP-SPW_IX-1415_XX_00-DR-CR-0001	BELFIELD / BLACKROCK TO CITY CENTRE CORE BUS CORRIDOR SCHEME. SITE LOCATION MAP AND SITE LOCATION PLAN. COVER SHEET
BCIDC-ARP-SPW_KP-1415_XX_00-DR-CR-0001	BELFIELD / BLACKROCK TO CITY CENTRE CORE BUS CORRIDOR SCHEME. SITE LOCATION MAP
BCIDC-ARP-SPW_ZZ-1415_XX_00-DR-CR-0001 to 0005	BELFIELD / BLACKROCK TO CITY CENTRE CORE BUS CORRIDOR SCHEME. SITE LOCATION PLAN

\\global\europa\Dublin\Jobs\2686000268401-004_Interna\4-02 Drawings\4-02 BCIDC\BCIDC-ARP-SPW_IX-1415_XX_00-DR-CR-0001.dwg

Disclaimer

a. © National Transport Authority (NTA) 2022. This drawing is confidential and the copyright in it is owned by NTA. This drawing must not be either loaned, copied or otherwise reproduced in whole or in part or used for any purpose without the prior permission of NTA.

b. This drawing is to be used for the design element identified in the titleblock. Other information shown is to be considered indicative only. The drawing is to be read in conjunction with all other relevant design drawings.

c. O.S. data used for plans are printed under © Ordnance Survey Ireland Government of Ireland. All rights reserved. Licence Number 2022/OSI_NMA_180 National Transport Authority. All elevations are in metres and relate to OSI Geoid Model (OSGM15) Mean Head. All Co-ordinates are in Irish Transverse Mercator Grid (ITM) as defined by OSI active local GPS station.

d. Information concerning the position of apparatus shown on this drawing is based on drawings supplied by the utility owners and/or the utility works contractor, whilst every care has been taken in the preparation of this drawing, positions should be taken as approximate and are intended for general guidance only and no representation is made by the NTA as to the accuracy, completeness, sufficiency or otherwise of this drawing and the position of the apparatus. The information contained herein does not purport to be comprehensive or final as the apparatus is subject to being altered and/or superseded. Recipients should not rely on this information. Any liabilities are hereby expressly disclaimed.

e. The information contained herein has been provided by the NTA but does not purport to be comprehensive or final. Recipients should not rely on the information. Neither the NTA nor any of its directors, officers, employees, agents, stakeholders or advisers make any representation or warranty as to, or accept any liability or responsibility in relation to, the adequacy, accuracy, reasonableness or completeness of the information provided as part of this document or any matter on which the information is based (including but not limited to loss or damage arising as a result of reliance by recipients on the information or any part of it). Any liabilities are hereby expressly disclaimed.

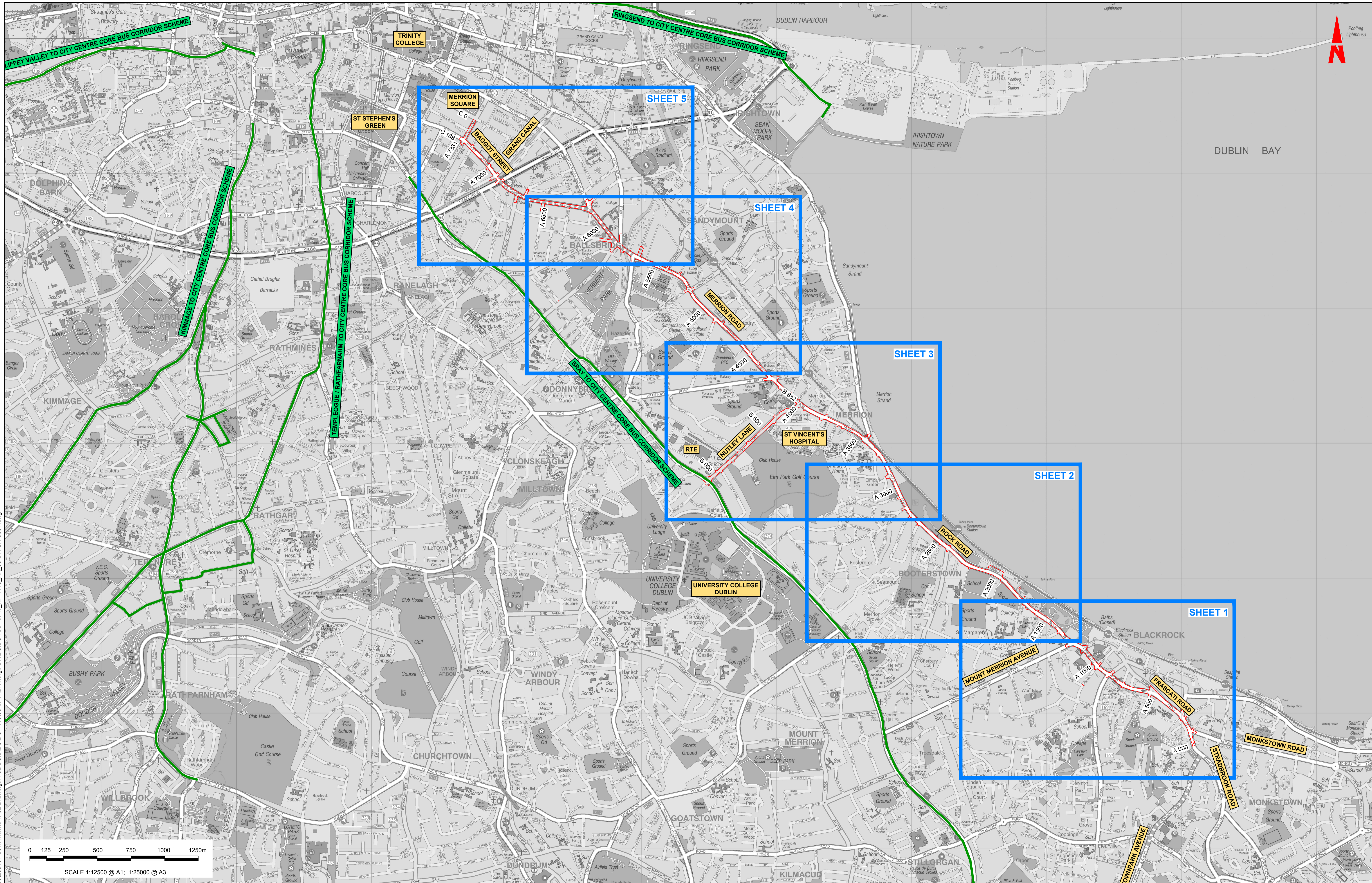


Rev	Date	Dm	Chk'd	App'd	Description
M01	04/03/2022	GMcT	BB	NH	ISSUE FOR PHASE 4: PLANNING

Client NTA Údarás Náisiúnta Iompair National Transport Authority		Engineering Designer ARUP		
Date 04/03/2022	Scale N/A @ A1 N/A @ A3	Drawn GMcT	Checked BB	Approved NH
Project Code BCIDC	Originator Code ARP	QMS Code 268401-00		

Programme Title BUSCONNECTS DUBLIN CORE BUS CORRIDORS INFRASTRUCTURE WORKS			
Drawing Title BELFIELD / BLACKROCK TO CITY CENTRE CORE BUS CORRIDOR SCHEME SITE LOCATION MAP AND SITE LOCATION PLAN COVER SHEET			
Drawing File Name BCIDC-ARP-SPW_IX-1415_XX_00-DR-CR-0001	Sheet Number 01 of 01	Status A	Rev M01

DO NOT SCALE USE FIGURED DIMENSIONS ONLY



Disclaimer
 a. © National Transport Authority (NTA) 2022. This drawing is confidential and the copyright in it is owned by NTA. This drawing must not be either loaned, copied or otherwise reproduced in whole or in part or used for any purpose without the prior permission of NTA.
 b. This drawing is to be used for the design element identified in the titleblock. Other information shown is to be considered indicative only. The drawing is to be read in conjunction with all other relevant design drawings.
 c. O.S. data used for plans are printed under © Ordnance Survey Ireland Government of Ireland. All rights reserved. Licence Number 2022/OSI_NMA_180 National Transport Authority. All elevations are in metres and relate to OSi Good Model (OSGM15) Main Head. All Co-ordinates are in Irish Transverse Mercator Grid (ITM) as defined by OSI active local GPS station.
 d. Information concerning the position of apparatus shown on this drawing is based on drawings supplied by the utility owners and/or the utility works contractor, whilst every care has been taken in the preparation of this drawing, positions should be taken as approximate and are intended for general guidance only and no representation is made by the NTA as to the accuracy, completeness, sufficiency or otherwise of this drawing and the position of the apparatus. The information contained herein does not purport to be comprehensive or final as the apparatus is subject to being altered and/or superseded. Recipients should not rely on this information. Any liabilities are hereby expressly disclaimed.
 e. The information contained herein has been provided by the NTA but does not purport to be comprehensive or final. Recipients should not rely on the information. Neither the NTA nor any of its directors, officers, employees, agents, stakeholders or advisers make any representation or warranty as to, or accept any liability or responsibility in relation to, the adequacy, accuracy, reasonableness or completeness of the information provided as part of this document or any matter on which the information is based (including but not limited to loss or damage arising as a result of reliance by recipients on the information or any part of it). Any liabilities are hereby expressly disclaimed.

Project Ireland 2040
 Building Ireland's Future

Rev	Date	Drn	Chkd	App'd	Description
M01	04/03/2022	GMcT	BB	NH	ISSUE FOR PHASE 4: PLANNING

Client	Engineering Designer	Programme Title
NTA Údaráis Náisiúnta Iompair National Transport Authority	ARUP	BUSCONNECTS DUBLIN CORE BUS CORRIDORS INFRASTRUCTURE WORKS
Date	Scale	Drawing
04/03/2022	1:12,500 @ A1 1:25,000 @ A3	GMcT
Project Code	Originator Code	Checked
BCIDC	ARP	BB
	QMS Code	Approved
	268401-00	NH

Drawing Title	Sheet Number	Status	Rev
BELFIELD / BLACKROCK TO CITY CENTRE CORE BUS CORRIDOR SCHEME SITE LOCATION MAP	01 of 01	A	M01
Drawing File Name	Sheet Number	Status	Rev
BCIDC-ARP-SPW_KP-1415_XX_00-DR-CR-0001	01 of 01	A	M01

DO NOT SCALE USE FIGURED DIMENSIONS ONLY



LEGEND:

 SITE EXTENTS

NOTES:

- FOR SITE LOCATION MAP SEE DRAWINGS SERIES SPW_KP
- FOR GENERAL ARRANGEMENTS SEE DRAWINGS SERIES GEO_GA

Disclaimer

a. © National Transport Authority (NTA) 2022. This drawing is confidential and the copyright in it is owned by NTA. This drawing must not be either loaned, copied or otherwise reproduced in whole or in part or used for any purpose without the prior permission of NTA.

b. This drawing is to be used for the design element identified in the title block. Other information shown is to be considered indicative only. The drawing is to be read in conjunction with all other relevant design drawings.

c. O.S. data used for plans are printed under © Ordnance Survey Ireland Government of Ireland. All rights reserved. Licence Number 2022/OSI_NMA_180 National Transport Authority. All elevations are in metres and relate to OSI Geoid Model (OSGM15) Mean Head. All Co-ordinates are in Irish Transverse Mercator Grid (ITM) as defined by OSI active local GPS station.

d. Information concerning the position of apparatus shown on this drawing is based on drawings supplied by the utility owners and/or the utility works contractor, whilst every care has been taken in the preparation of this drawing, positions should be taken as approximate and are intended for general guidance only and no representation is made by the NTA as to the accuracy, completeness, sufficiency or otherwise of this drawing and the position of the apparatus. The information contained herein does not purport to be comprehensive or final as the apparatus is subject to being altered and/or superseded. Recipients should not rely on this information. Any liabilities are hereby expressly disclaimed.

e. The information contained herein has been provided by the NTA but does not purport to be comprehensive or final. Recipients should not rely on the information. Neither the NTA nor any of its directors, officers, employees, agents, stakeholders or advisers make any representation or warranty as to, or accept any liability or responsibility in relation to, the adequacy, accuracy, reasonableness or completeness of the information provided as part of this document or any matter on which the information is based (including but not limited to loss or damage arising as a result of reliance by recipients on the information or any part of it). Any liabilities are hereby expressly disclaimed.



Rev	Date	Drm	Chk'd	App'd	Description
M01	04/03/2022	GMcT	BB	NH	ISSUE FOR PHASE 4: PLANNING

Client

NTA
Údarás Náisiúnta Iompair
National Transport Authority

Engineering Designer

ARUP

Date: 04/03/2022
Scale: 1:2500 @ A1
1:5000 @ A3

Drawn: GMcT
Checked: BB
Approved: NH

Project Code: BCIDC
Originator Code: ARP
QMS Code: 268401-00

Programme Title

BUSCONNECTS DUBLIN
CORE BUS CORRIDORS INFRASTRUCTURE WORKS

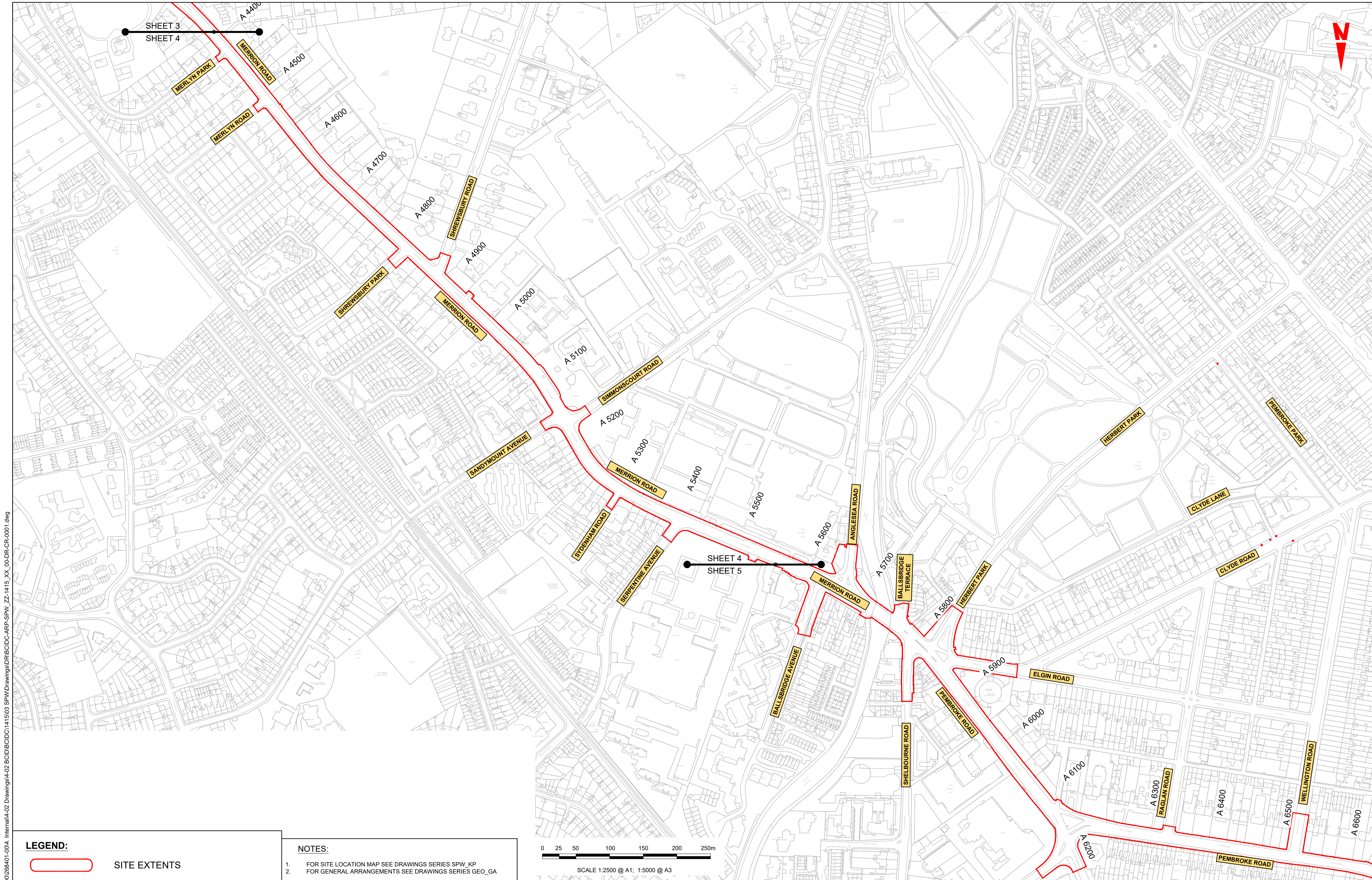
Drawing Title


BELFIELD / BLACKROCK TO CITY CENTRE CORE BUS CORRIDOR SCHEME
SITE LOCATION PLAN

Drawing File Name: BCIDC-ARP-SPW_ZZ-1415_XX_00-DR-CR-0001
Sheet Number: 01 of 05
Status: A
Rev: M01

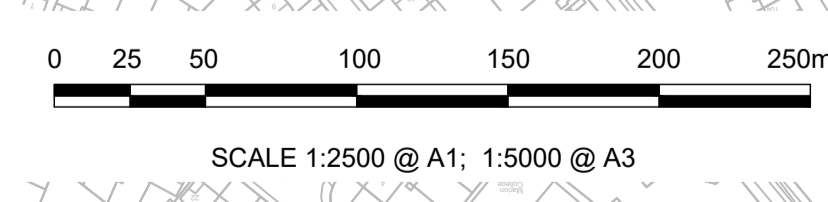
DO NOT SCALE USE FIGURED DIMENSIONS ONLY

\\global\europa\Dublin\Jobs\268600\268401-004_Interna\4-02_Drawing\4-02 BCIDC\BCIDC-ARP-SPW_ZZ-1415_XX_00-DR-CR-0001.dwg



LEGEND:
 SITE EXTENTS

NOTES:
 1. FOR SITE LOCATION MAP SEE DRAWINGS SERIES SPW_KP
 2. FOR GENERAL ARRANGEMENTS SEE DRAWINGS SERIES GEO_GA



Disclaimer
 a. © National Transport Authority (NTA) 2022. This drawing is confidential and the copyright in it is owned by NTA. This drawing must not be either loaned, copied or otherwise reproduced in whole or in part or used for any purpose without the prior permission of NTA.
 b. This drawing is to be used for the design element identified in the titleblock. Other information shown is to be considered indicative only. The drawing is to be read in conjunction with all other relevant design drawings.
 c. D.S. data used for plans are printed under © Ordnance Survey Ireland Government of Ireland. All rights reserved. Licence Number 2022/OSI_NMA_180 National Transport Authority. All elevations are in metres and relate to OSI Geoid Model (OSGM15) Mean Head. All Co-ordinates are in Irish

Transverse Mercator Grid (ITM) as defined by OSI active local GPS station.
 d. Information concerning the position of apparatus shown on this drawing is based on drawings supplied by the utility owners and/or the utility works contractor, whilst every care has been taken in the preparation of this drawing, positions should be taken as approximate and are intended for general guidance only and no representation is made by the NTA as to the accuracy, completeness, sufficiency or otherwise of this drawing and the position of the apparatus. The information contained herein does not purport to be comprehensive or final as the apparatus is subject to being altered and/or superceded. Recipients should not rely on this information. Any liabilities are hereby expressly disclaimed.

The information contained herein has been provided by the NTA but does not purport to be comprehensive or final. Recipients should not rely on the information. Neither the NTA nor any of its directors, officers, employees, agents, stakeholders or advisers make any representation or warranty as to, or accept any liability or responsibility in relation to, the adequacy, accuracy, reasonableness or completeness of the information provided as part of this document or any matter on which the information is based (including but not limited to loss or damage arising as a result of reliance by recipients on the information or any part of it). Any liabilities are hereby expressly disclaimed.



Rev	Date	Dm	Chk'd	App'd	Description
M01	04/03/2022	GMcT	BB	NH	ISSUE FOR PHASE 4: PLANNING

Client: **NTA**
 Údarás Náisiúnta Iompair
 National Transport Authority

Engineering Designer: **ARUP**

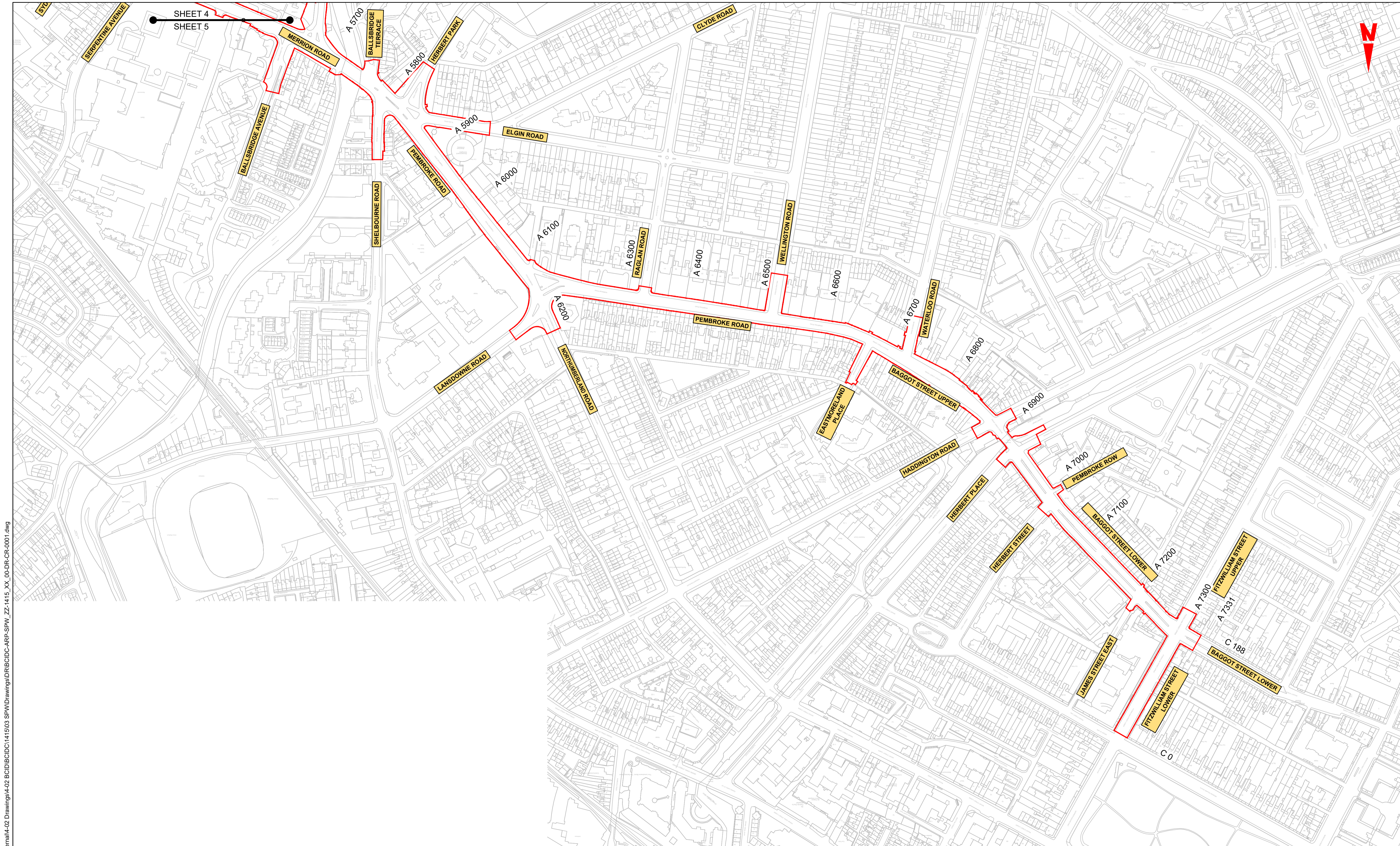
Date: 04/03/2022 | Scale: 1:2500 @ A1, 1:5000 @ A3 | Drawn: GMcT | Checked: BB | Approved: NH

Project Code: BCIDC | Originator Code: ARP | QMS Code: 268401-00

Programme Title: BUSCONNECTS DUBLIN CORE BUS CORRIDORS INFRASTRUCTURE WORKS			
Drawing Title: BELFIELD / BLACKROCK TO CITY CENTRE CORE BUS CORRIDOR SCHEME SITE LOCATION PLAN			
Drawing File Name: BCIDC-ARP-SPW_ZZ-1415_XX_00-DR-CR-0004	Sheet Number: 04 of 05	Status: A	Rev: M01

DO NOT SCALE USE FIGURED DIMENSIONS ONLY

\\global\europa\Dublin\Jobs\268401-004_Interna\4-02 Drawings\4-02 BCIDC\BCIDC-ARP-SPW_ZZ-1415_XX_00-DR-CR-0001.dwg



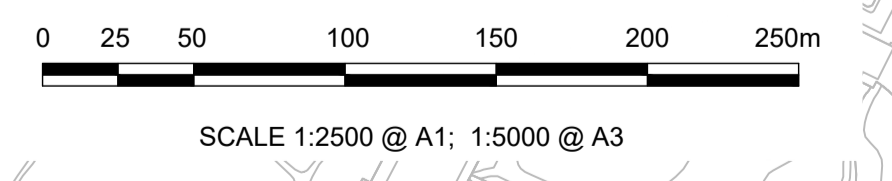
\global\europa\Dublin\Jobs\268600\2686401-004_Interna\4-02 Drawings\4-02 BCID\BCIDC\BCIDC-ARP-SPW_ZZ-1415_XX_00-DR-CR-0001.dwg

LEGEND:

SITE EXTENTS

NOTES:

- FOR SITE LOCATION MAP SEE DRAWINGS SERIES SPW_KP
- FOR GENERAL ARRANGEMENTS SEE DRAWINGS SERIES GEO_GA



Disclaimer

a. © National Transport Authority (NTA) 2022. This drawing is confidential and the copyright in it is owned by NTA. This drawing must not be either loaned, copied or otherwise reproduced in whole or in part or used for any purpose without the prior permission of NTA.

b. This drawing is to be used for the design element identified in the title block. Other information shown is to be considered indicative only. The drawing is to be read in conjunction with all other relevant design drawings.

c. O.S. data used for plans are printed under © Ordnance Survey Ireland Government of Ireland. All rights reserved. Licence Number 2022/OSI_NMA_180 National Transport Authority. All elevations are in metres and relate to OSI Geoid Model (OSGM15) Mean Head. All Co-ordinates are in Irish Transverse Mercator Grid (ITM) as defined by OSI active local GPS station.

d. Information concerning the position of apparatus shown on this drawing is based on drawings supplied by the utility owners and/or the utility works contractor, whilst every care has been taken in the preparation of this drawing, positions should be taken as approximate and are intended for general guidance only and no representation is made by the NTA as to the accuracy, completeness, sufficiency or otherwise of this drawing and the position of the apparatus. The information contained herein does not purport to be comprehensive or final as the apparatus is subject to being altered and/or superceded. Recipients should not rely on this information. Any liabilities are hereby expressly disclaimed.

e. The information contained herein has been provided by the NTA but does not purport to be comprehensive or final. Recipients should not rely on the information. Neither the NTA nor any of its directors, officers, employees, agents, stakeholders or advisers make any representation or warranty as to, or accept any liability or responsibility in relation to, the adequacy, accuracy, reasonableness or completeness of the information provided as part of this document or any matter on which the information is based (including but not limited to loss or damage arising as a result of reliance by recipients on the information or any part of it). Any liabilities are hereby expressly disclaimed.

Project Ireland 2040
Building Ireland's Future

Rev	Date	Dm	Chk'd	App'd	Description
M01	04/03/2022	GMcT	BB	NH	ISSUE FOR PHASE 4: PLANNING

Client

NTA
Udarás Náisiúnta Iompair
National Transport Authority

Date: 04/03/2022

Scale: 1:2500 @ A1
1:5000 @ A3

Project Code: BCIDC

Originator Code: ARP

Engineering Designer

ARUP

Drawn: GMcT

Checked: BB

Approved: NH

QMS Code: 268401-00

Programme Title BUSCONNECTS DUBLIN CORE BUS CORRIDORS INFRASTRUCTURE WORKS			
Drawing Title BELFIELD / BLACKROCK TO CITY CENTRE CORE BUS CORRIDOR SCHEME SITE LOCATION PLAN			
Drawing File Name BCIDC-ARP-SPW_ZZ-1415_XX_00-DR-CR-0005	Sheet Number 05 of 05	Status A	Rev M01

DO NOT SCALE USE FIGURED DIMENSIONS ONLY